

John Phillip Bradley

Email: johnbrad@hawaii.edu



ACADEMIC POSITIONS:

Current: **Research Professor**

Hawaii Institute of Geophysics and Planetology (since Jan 2014)
University of Hawaii at Manoa
Honolulu, HI 96822

Affiliate Specialist, National Center for Electron Microscopy, Lawrence Berkeley Laboratory

Past: Director, Institute of Geophysics and Planetary Physics,
Lawrence Livermore National Laboratory
Livermore, CA 94551
(July 2002-December 2013)

EXPERTISE: **Analytical transmission electron microscopy in materials science**

Minerals, meteoritic materials, energy storage materials, advanced semiconductor detector materials (e.g. CZT), alloys, ceramics, polymers, biomaterials, special nuclear materials

HONORARY APPOINTMENTS (Past decade):

Committee member, DoE-BES review of electron microscopy facilities at ORNL (SHARE) and LBNL (NCEM)

Committee member and coauthor, Midsize Facilities-The Infrastructure for Research Board of Physics and Astronomy, The National Academies

Science Advisor, NASA STARDUST comet sample return mission.

PROFESSIONAL SOCIETIES

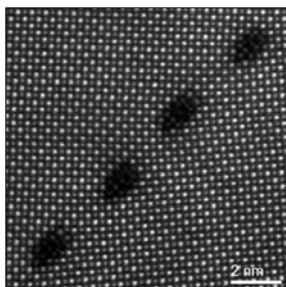
- American Association for the Advancement of Science
- American Physical Society
- Fellow of the Meteoritical Society
- Materials Research Society
- Microbeam Analysis Society

PEER-REVIEWED PUBLICATIONS:

- 100+ publications (excluding abstracts and Proceedings)
- 20+ **Science** and **Nature** papers (including 5 journal covers)



80-300 keV mono-chromated & dual Cs-corrected Titan "SuperSTEM" at U. Hawaii



Atomic resolution imaging (and spectroscopy)